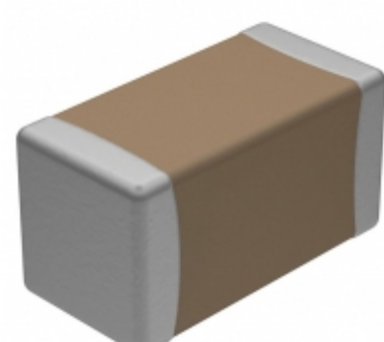


CDR32BP681BKZMAT



Part Number: [CDR32BP681BKZMAT](#)
Manufacturer: [Electro-Films \(EFI\) / Vishay](#)
Description: CAP CER 680PF 100V 10% BP 1206
Data sheet: [PDF CDR Series \(MIL-PRF-55681\)](#)

RoHS Status: Contains lead / RoHS non-compliant
Ship From: Hong Kong
Shipment Way: DHL/Fedex/TNT/UPS/EMS

Images are for reference only.
 See Product Specifications for product details.
 Buy CDR32BP681BKZMAT with confidence from
 Component-World.HK, 1 Year Warranty

[Request For Quotation](#)

PRODUCT PARAMETER

| | | | |
|--|--------------------------------|---|---|
| Part Number | CDR32BP681BKZMAT | Manufacturer | Electro-Films (EFI) / Vishay |
| Description | CAP CER 680PF 100V 10% BP 1206 | Lead Free Status / RoHS Status | Contains lead / RoHS non-compliant |
| Quantity Available | 147344 pcs | Data sheet | CDR Series (MIL-PRF-55681) |
| Category | Capacitors | Voltage - Rated | 100V |
| Tolerance | ±10% | Thickness (Max) | 0.051" (1.30mm) |
| Temperature Coefficient | BP | Size / Dimension | 0.126" L x 0.063" W (3.20mm x 1.60mm) |
| Series | Military, MIL-PRF-55681, CDR32 | Ratings | - |
| Packaging | Tape & Reel (TR) | Package / Case | 1206 (3216 Metric) |
| Other Names | CDR32BP681BKZMAT-MIL | Operating Temperature | -55°C ~ 125°C |
| Mounting Type | Surface Mount, MLCC | Moisture Sensitivity Level (MSL) | 1 (Unlimited) |
| Manufacturer Standard Lead Time | 32 Weeks | Lead Style | - |
| Lead Spacing | - | Lead Free Status / RoHS Status | Contains lead / RoHS non-compliant |
| Height - Seated (Max) | - | Features | - |
| Failure Rate | M (1%) | Detailed Description | 680pF ±10% 100V Ceramic Capacitor BP 1206 (3216 Metric) |
| Capacitance | 680pF | Applications | General Purpose |

Component-World.com is a Reliable Stocking Distributor of Electronic Components. We specialize in all Electro-Films (EFI) / Vishay series electronic components. We have 147344 pieces of Electro-Films (EFI) / Vishay CDR32BP681BKZMAT in stock available now. Request a quote from electronics components distributor at Component-World.com, our sales team will contact you within 24 hours.
 RFQ Email: info@Components-World.com

RELATED PRODUCTS

| | | | |
|--|--|--|---------------------|
| | Part#: CDR32BP681BKWSAB Description: CAP CER 680PF 100V BP 1206 | Manufacturers: Electro-Films (EFI) / Vishay | RFQ |
| | Part#: CDR32BP681BKUSAB Description: CAP CER 680PF 100V BP 1206 | Manufacturers: Electro-Films (EFI) / Vishay | RFQ |
| | Part#: CDR32BP681BKZPAT Description: CAP CER 680PF 100V 10% BP 1206 | Manufacturers: Electro-Films (EFI) / Vishay | RFQ |
| | Part#: CDR32BP681BKUSAJ Description: CAP CER 680PF 100V BP 1206 | Manufacturers: Electro-Films (EFI) / Vishay | RFQ |
| | Part#: CDR32BP681BKZPAR Description: CAP CER 680PF 100V BP 1206 | Manufacturers: Electro-Films (EFI) / Vishay | RFQ |
| | Part#: CDR32BP681BKZPAJ Description: CAP CER 680PF 100V BP 1206 | Manufacturers: Electro-Films (EFI) / Vishay | RFQ |
| | Part#: CDR32BP681BKUS7185 Description: CAP CER 680PF 100V BP 1206 | Manufacturers: KEMET | RFQ |
| | Part#: CDR32BP681BKWSAJ Description: CAP CER 680PF 100V BP 1206 | Manufacturers: Electro-Films (EFI) / Vishay | RFQ |
| | Part#: CDR32BP6R2BCUSAJ Description: CAP CER 6.2PF 100V BP 1206 | Manufacturers: Electro-Films (EFI) / Vishay | RFQ |
| | Part#: CDR32BP6R2BCUSAR Description: CAP CER 6.2PF 100V BP 1206 | Manufacturers: Electro-Films (EFI) / Vishay | RFQ |
| | Part#: CDR32BP681BKUR Description: CAP CER 680PF 100V BP 1206 | Manufacturers: KEMET | RFQ |
| | Part#: CDR32BP681BKZSAC Description: CAP CER 680PF 100V BP 1206 | Manufacturers: Electro-Films (EFI) / Vishay | RFQ |
| | Part#: CDR32BP6R2BCUSAB Description: CAP CER 6.2PF 100V BP 1206 | Manufacturers: Electro-Films (EFI) / Vishay | RFQ |
| | Part#: CDR32BP681BKWSAT Description: CAP CER 680PF 100V BP 1206 | Manufacturers: Electro-Films (EFI) / Vishay | RFQ |
| | Part#: CDR32BP681BKZSAT Description: CAP CER 680PF 100V 10% BP 1206 | Manufacturers: Electro-Films (EFI) / Vishay | RFQ |
| | Part#: CDR32BP681BKUSAT Description: CAP CER 680PF 100V BP 1206 | Manufacturers: Electro-Films (EFI) / Vishay | RFQ |
| | Part#: CDR32BP681BKUSAR Description: CAP CER 680PF 100V BP 1206 | Manufacturers: Electro-Films (EFI) / Vishay | RFQ |
| | Part#: CDR32BP681BKZRAT Description: CAP CER 680PF 100V 10% BP 1206 | Manufacturers: Electro-Films (EFI) / Vishay | RFQ |
| | Part#: CDR32BP681BKWSAR Description: CAP CER 680PF 100V BP 1206 | Manufacturers: Electro-Films (EFI) / Vishay | RFQ |
| | Part#: CDR32BP681BKZPAB Description: CAP CER 680PF 100V BP 1206 | Manufacturers: Electro-Films (EFI) / Vishay | RFQ |

Related keywords for CDR32BP681BKZMAT

| | | | |
|---|---|---------------------------------------|---|
| Electro-Films (EFI) / Vishay CDR32BP681BKZMAT | CDR32BP681BKZMAT distributor | CDR32BP681BKZMAT supplier | CDR32BP681BKZMAT price |
| CDR32BP681BKZMAT download datasheet | CDR32BP681BKZMAT datasheet | CDR32BP681BKZMAT stock | buy CDR32BP681BKZMAT |
| Electro-Films (EFI) / Vishay CDR32BP681BKZMAT | Electro-Films (EFI) / Vishay CDR32BP681BKZMAT | Vishay Electro-Films CDR32BP681BKZMAT | Phoenix Passive Components / Vishay CDR32BP681BKZMAT |